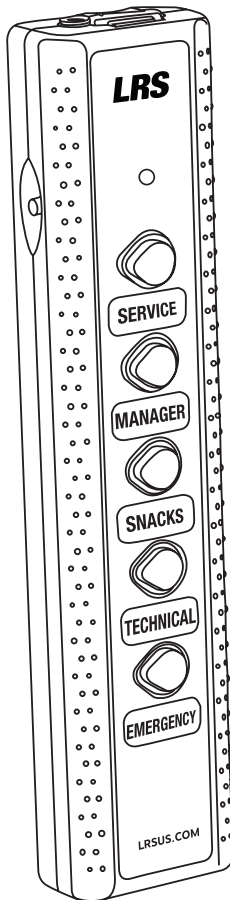




Butler II

Five Button System

MODEL: TX-1605-5



Long Range Systems, LLC.

LRSUS.COM | 800.437.4996 | 214.553.5308

TABLE OF CONTENTS

Programming the Bulter II	3
Install Programmer	3
Connecting the Butler II	3
Setup Data	4
Update Unit	4
Buttons and Input Tab Setup	5
Buttons 1 through 5	5
External Input Button	5
Advanced Features Tab Setup	6
Lockout	7
System ID	7
Repaging Enable	8
Low Battery Page	9
Save a Configuration	9
Load an Existing Configuration	10
Programming Pagers	11
Alpha Pagers	12
Star & Coaster Pager	12
Warranty	13
Terms & Conditions	14

PROGRAMMING THE BUTLER II

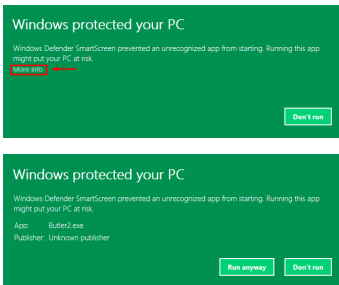
The Butler II with 5 buttons and single external input can be programmed to page up to six different pager numbers (or any number of pagers with the same number).

Install Programmer

Butler II Programming

1. Find the software and download it from Irsus.com/downloads.
2. Launch the Butler 2 application found under the Windows Start menu.

Note: An alert might appear from windows. [Click on more info and Run anyway]



There will be 2 residual folders on the desktop, these are not needed anymore, and can be deleted.

External Input					
Enabled	Setting	Pager	Type	Mode	Message
<input checked="" type="checkbox"/>	Normally Open	1	Star	VIBE 1	0

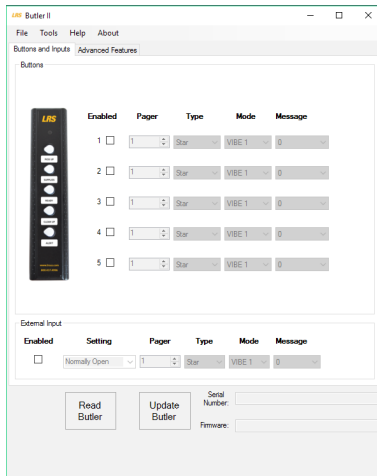
Connecting the Butler II

NOTE: Remove all batteries from the Butler II before connecting to the computer.

The computer will not detect the Butler II properly if batteries are still in when the Butler II is connected to the PC. Push the ridged button on the top end of the Butler II to remove the cover.

You may insert batteries AFTER the Butler II is connected to the PC.

1. Open the Butler II programmer (double click on the Icon).
2. Connect the USB cable from the PC to the Butler II.



Operation

3. Ensure the Butler II's red light is faintly flashing.

Setup Data

4. Press the Read Butler button on the programmer software, this will check the contents of the Butler II.
5. Setup or change any of the current Butler II settings as needed using the programming screen tabs. Alternatively load a previously stored configuration from the PC using the "File" "Load Configuration" found on the top menu bar.

Update Unit

6. Press the Update Butler button on the programmer software.
7. When the progress bar reaches 100% and disappears from the screen, disconnect the Butler II, press a button to test it, and put it into service

BUTTONS AND INPUT SETUP

The Buttons section is used to setup the message sent to the pager when a Butler II button is pressed. To set up a pager message:

NOTE: A button must be enabled to operate. Button 1 is closest to the external input port.

1. Click the box next to the button number to check, enabling the button. Click again to uncheck and disable.
2. Enter the pager number this button will page (check the number label on the pager).
3. Enter the pager type this button will page (alpha numeric, "Star" or "Guest").
4. Type in the associated text message (or select vibrate and number 0-9 for "Star").
5. Do steps 1 through 4 for all buttons to be used.
6. Press Update Butler when done.

External Input Button

The external input is a contact or switch that is connected through a wire to the Butler II. This sensor can send a message to the pager when an event happens (e.g., alarm if a door is opened).

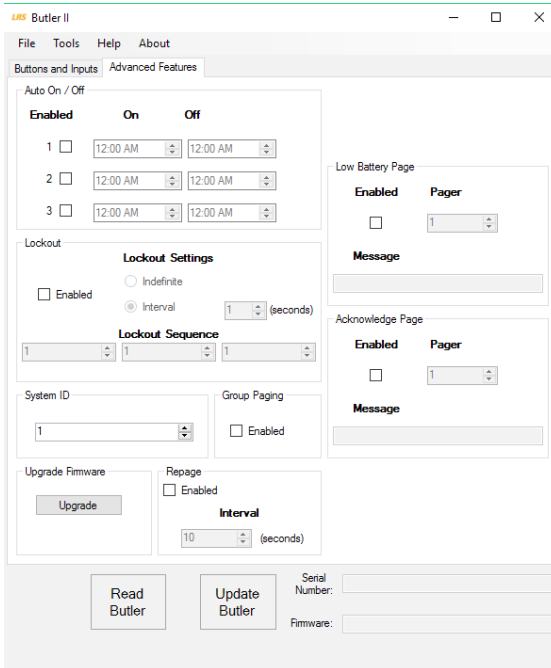
External Input					
Enabled	Setting	Pager	Type	Mode	Message
<input checked="" type="checkbox"/>	Normally Open	1	Star	VIBE 1	0

NOTE: The contact must be enabled to operate.

To set up a pager message:

1. Click on Enable box to enable or disable (a check mark indicates input is enabled).
2. Select Normally Open (like a doorbell) or Normally Closed (like a door sensor).
3. Enter the pager number/type this input will page (check the number on the pager).
4. Enter the associated message.
5. Press Update Butler when done.

ADVANCED FEATURES TAB SETUP



Auto ON/Off

Allows the Butler II to automatically enable and disable at certain times of the day (e.g., a door alarm that is disabled during business hours). Three time periods can be set.

To Set:

1. Insert batteries into transmitter.

NOTE: If batteries are not inserted when power is removed, the Butler II's internal clock will default to 12:00 AM.

2. Enable the function
3. Set the time to turn the system on. Set the time to turn the system off (two on off function lines are required).
4. Press Update Butler when done.

Once set, the function is automatic.

NOTE: If replacing batteries during maintenance, the Butler II will need to be connected to a PC to maintain the internal clock.

Lockout

A three digit code that disables the external sensor input (e.g., the door alarms and the staff disables the alarm at the Butler II) for a selected period of time.

To set:

Lockout

Lockout Settings

Enabled

Indefinite

Interval 1 (seconds)

Lockout Sequence

1 1 1

1. Enter a 3 digit Lockout Sequence.
2. Select a Lockout Setting.
 - Indefinite will disable the unit until the external input is activated.
 - Enter an interval of 179 or less to disable the unit for 179 seconds or less.
3. Press Update Butler when done.

To Use:

1. Press side button until the unit begins flashing.
2. Enter the 3-digit disable code. The LED will begin flashing rapidly.
3. If the unit is set for:
 - Less than 180 seconds - The unit will rearm after the preset lockout time.
 - Indefinite - The unit will only rearm if the external contact is activated.

System ID

In the event more than one LRS system is in a close proximity to another, a system ID can be changed to avoid interference (Note: Each individual pager must have its system ID changed). To set:

1. Select the ID to use.
2. Press Update Butler when done.

System ID

1

Group Paging

Enabled

Upgrade Firmware

Upgrade

Repage

Enabled

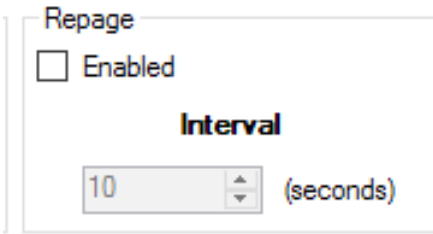
Interval

Repaging Enable

This feature will enable or disable resending pages when the button is pressed.

NOTE: Acknowledge Page must be enabled for this feature to work. To set:

1. Click on Enabled box to enable or disable (a check mark indicates input is enabled).
2. Enter a repage time. Must be 10 seconds or more.
3. Press Update Butler when done.



Repage

Enabled

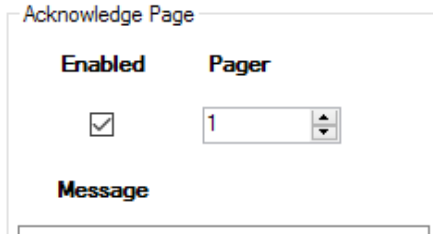
Interval

10 (seconds)

Acknowledge Page

When used, the acknowledge button will send a message to management indicating the time between an alarm (or other input) and staff response. It also cancels the re-page.

This button is located on the side of the Butler II. To Set:



Acknowledge Page

Enabled **Pager**

 1

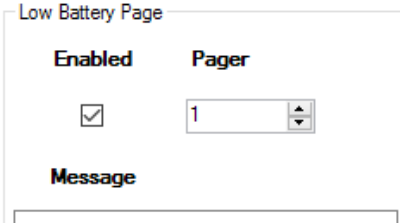
Message

1. Enable the function.
2. Enter the pager that will be paged and the message that will be displayed.
3. Press Update Butler when done.

To Use: When a button is pressed the page will repeat at the selected interval until the acknowledge button is pressed (located on the side of the Butler II) or a magnet is run near the acknowledge button

Low Battery Page

The Butler II can send a low battery message to a selected pager when batteries are low. To set:



Low Battery Page

Enabled	Pager
<input checked="" type="checkbox"/>	1
Message	

1. Enable the function.
2. Enter the pager that will be paged and the message that will be displayed.
3. Press Update Butler when done.

To Use: Once set, the function automatically alerts the selected pager when the batteries get low.

SAVE A CONFIGURATION

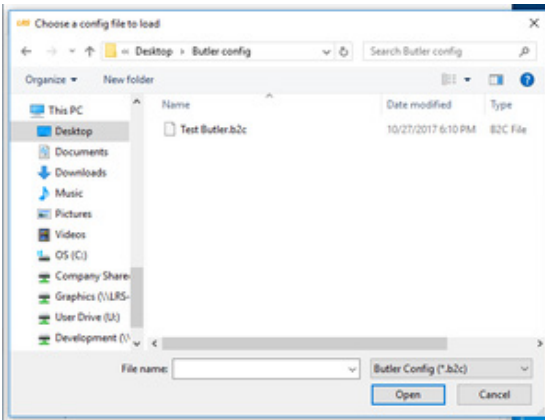
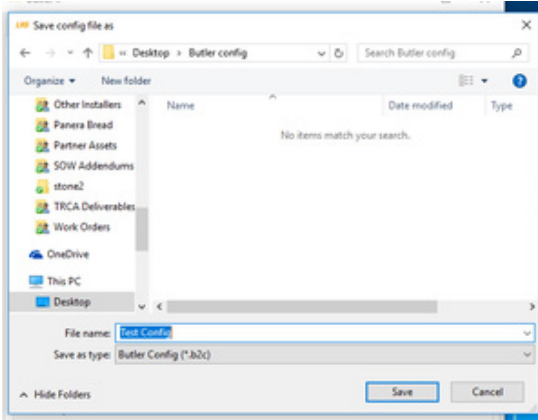
This feature allows the user to store a read or modified configuration from Butler II's. File will save to a .b2c extension. To save a Configuration:

1. Select File, Save Configuration.
2. Enter file name, select destination, and Save

LOAD AN EXISTING CONFIGURATION

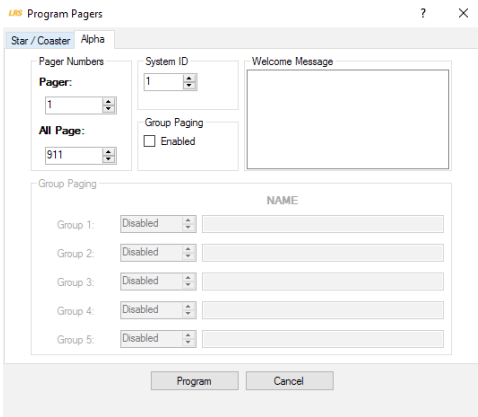
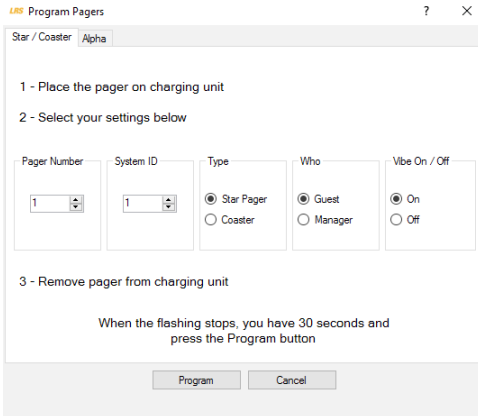
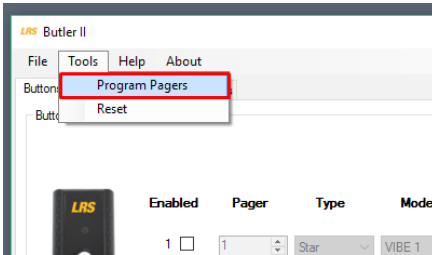
This feature allows the user to load a preset configuration to Butler II's. To Load:

1. Select File, Load Configuration.
2. Select configuration file and Open.
3. Press Update Butler (USB cable must be attached to Butler II).



PROGRAMMING PAGERS

Before programming a pager, make sure the pager is fully charged and still in charger or has fresh battery. Select from the menu Tools, Program Pagers.



Alpha Pagers

1. Select the Alpha tab.
2. Enter an optional Welcome Message for RX-E467 Alpha Pagers (message appears when pager powers up).
3. Set the System ID. Must match System ID of Butler II.
4. Set the Pager Number and All Page number.
5. If Group Paging is enabled, select up to 5 groups to program. Note: When enabled, Group Paging will use numbers 1-98 and the Pager Number field will start at 100 instead of 1. User may also enter optional Group Names.
6. Remove rechargeable pager from charger or reset power on battery operated pager.
7. Press Program.

Star and Coaster Pagers

1. Select the Star/Coaster tab.
2. Select Pager Number and input the number to assign to the pager.
3. Select type of pager, guest or manager, and if the pager is to vibrate when paged turn "on" the Vibe On/Off selection.
4. Press Program.
5. Repeat steps 2 through 5 for each pager to program.

WARRANTY

Long Range Systems, LLC (LRS) provides a one-year limited warranty on Complete Systems. We warranty your system against defects in materials and workmanship that occur under ordinary use for one year from the original ship date. Warranty does not include damage to the product resulting from accident, natural disasters, misuse, improper electrical connection, or failure to charge the product within 30 days of receipt. Devices with a rechargeable battery are required to stay on charge while not in use. Rechargeable devices that are left off of charge for longer than 90 days will have a negative impact on the life of the batteries and will void the warranty. If a defect arises in a device, we will at our option, to the extent permitted by law, either (i) repair the Device using either new or refurbished parts, or (ii) replace the Device with a new or refurbished Device that is equivalent to the Device to be replaced.

LRS provides a 30-day limited warranty on individual parts purchased separately (“Parts”) or for the remaining period of an associated Complete System’s one-year warranty, whichever period is longer.

Implied warranties also expire after one year (Complete Systems) or 30-days (Parts), as appropriate. All other warranties, whether express or implied, are disclaimed.

LRS returns repaired or replacement product via UPS ground shipping. All warranty claims must be initiated through our customer service department at lrsus.com/support, support@lrsus.com or 800.437.4996.

Exclusions and exceptions may apply. To view our entire warranty policy, visit <http://lrsus.com/warranties>. For information about LRS’ return policy, visit <http://pager.net/company/return-policy/>.

You can also contact our customer service department to request a written copy of our warranties via:

support@lrsus.com

800.437.4996

Mail address:

LRS, LLC
4550 Excel Parkway, Suite 200
Addison, Texas 75001

TERMS & CONDITIONS

These general terms and conditions (“General Terms and Conditions”) govern all persons (“Purchasers”) that purchase or license equipment, software, firmware, and/or services (collectively “Deliverables”) from Long Range Systems, LLC (“LRS”).

Limited Software Use License. All software and firmware (collectively “Software”) is licensed for use only by Purchaser and, in the case of Software for paging receivers, by customers of Purchasers. The Software is not sold.

Usage Restriction. Paging technology may at times not work due to structural and other types of interference with signal transmission and due to other reasons. Purchaser therefore agrees not to use any Deliverable for an application in which a paging failure might cause harm to a person, injury to a property, or a substantial business loss. Purchaser also agrees to abide by and strictly adhere to any rules, regulations and guidelines related to the use of any portion of any Deliverable to collect, store or transmit personally-identifiable information, including any “protected health information” (as defined by HIPAA), or billing or financial payment data, from any customer or other consumer.

Data Collection. In connection with the Deliverables, data provided by Purchaser and its customers may be collected in connection with surveys, consultations, and uses of the Deliverables, including email addresses, telephone numbers, locations of users (which may utilize geo-location technology), times of usage, times of paging, times of responses to paging, devices used, configuration preferences, cookies, and social network information. In order to provide LRS’s customers with enhanced comparative benchmarking services with respect to customer industries, among other services, Purchaser hereby grants to LRS a royalty-free, perpetual, irrevocable license to use and distribute this data and results obtained through Purchaser’s use of the Deliverables for any and all purposes; provided that LRS shall not identify any Purchaser, or distribute to third parties any “protected health information” (as defined by HIPAA) or billing or financial payment data of any customer or consumer of Purchaser, without the express prior consent of such Purchaser. Purchaser warrants that Purchaser has the right to disclose, transfer or otherwise make available any Protected Health Information (as defined in 45 C.F.R. § 160.103) or other personally identifiable information that is made available to LRS by Purchaser or by Purchaser’s customers in connection with the Software or other Deliverables. Without limiting the foregoing, Purchaser shall obtain all authorizations, consents or other permissions from Purchaser’s customers (or the customer’s authorized personal representative) for the disclosure of customers’ personally identifiable information to LRS that are required by federal, state or local law, including, without limitation, the administrative simplification section of the Health Insurance Portability and Accountability Act of 1996 and its implementing regulations.

Limited Warranty. LRS warrants to only Purchaser that the Deliverables will perform in accordance with specifications for them that LRS has published prior to their delivery for a period of time as specified in the purchase agreement or purchase order relating to such Deliverables. This limited warranty shall be voided if any Deliverable is modified or

serviced by someone other than LRS.

Disclaimers. LRS HEREBY DISCLAIMS ALL IMPLIED WARRANTIES CONCERNING THE DELIVERABLES, INCLUDING ANY IMPLIED WARRANTY OF MERCHANTABILITY, ANY IMPLIED WARRANTY OF FITNESS FOR A PARTICULAR PURPOSE, OR ANY IMPLIED WARRANTY OF NON-INFRINGEMENT. PURCHASER ACCEPTS

THE DELIVERABLES “AS IS,” EXCEPT FOR THE EXPRESS LIMITED WARRANTY MADE HEREIN.

Limitation of Remedies. In the event of any breach of any express warranty made herein, LRS may at its option repair or replace any defective Deliverable or refund the money that Purchaser paid for it. LRS’s total liability for any defect in any Deliverable or for any other breach of any of its duties and obligations to Purchaser shall be limited to the amount of money that was paid for the defective Deliverable or the other duty or obligation. LRS will in no event be liable for any lost profit or any other type of consequential damage.

Confidentiality. The Deliverables and all computer systems that deliver any portion of them contain confidential trade secret information. Purchaser shall not attempt to reverse engineer any portion of the Deliverables or such computer systems, such as to decompile any portion of the Software, nor aid anyone else in doing so.

Intellectual Property. No portion of any intellectual property right in the Deliverables is being transferred to the Purchaser or to its customers. Purchaser may not copy or modify any portion of the Deliverables, nor permit or aid anyone else in doing so. Notwithstanding, Purchaser may use the Deliverables as they are intended to be used, as expressed in written materials published by LRS.

Operational Authority and Licensing Requirements. Non-Federal government Purchasers may operate the Deliverables within the United States under the licensing authority issued to LRS by the Federal Communications Commission (FCC), provided, however, that such operation is: (a) subject to LRS’s control, (b) conducted on a non-profit, cost shared basis with costs apportioned as part of the price for such Deliverable, (c) in accordance method of operation set forth in the manual for the deliverable, available for download at <http://lrsus.com/support> and (d) limited to the term of this Agreement, the term of LRS’s authority, or a term otherwise specified by LRS, whichever expires earlier. Notwithstanding the provision below entitled “No Third Party Beneficiary,” users of any Deliverables acquired from Purchasers or other entities may contact LRS to determine if they may be eligible to operate under LRS’s authority. Alternatively, Purchasers and users may obtain their own licensing authority; the FCC posts a list of licensing coordinators at http://wireless.fcc.gov/services/index.htm?job=licensing_3&id=industrial_business. Purchasers and eligible users of any Deliverable agree to abide by and strictly adhere to any rules, regulations and guidelines, including the FCC’s rules, governing the operation of the Deliverable. Changes or modifications to any portion of any Deliverable may void the Purchaser’s or user’s authority to operate the Deliverable and should not be made without the express approval of LRS. Moreover, use of any portion of any Deliverable outside the United States is subject to the rules and regulations of other countries and may be prohibited. Use of any Deliverable constitutes Purchaser’s and user’s acceptance of and agreement to

these General Terms and Conditions, including any revisions to these General Terms and Conditions that may be required to reflect changes in the regulatory or other obligations imposed upon LRS.

Governing Law and Venue. These General Terms and Conditions and any agreement relating to them shall be construed in accordance with and governed by the laws of the State of Texas (without regard to its conflicts of laws). Any dispute relating to these General Terms and Conditions and any agreement relating to them may only be heard and resolved by a court in Dallas County in the State of Texas. Purchaser consents to the personal jurisdiction of such courts over it. If any action at law or in equity is necessary to enforce or interpret any of the rights or obligations of the parties to these General Terms and Conditions, the prevailing party shall be entitled to reasonable attorneys' fees, costs, and necessary disbursements, in addition to any other relief to which it may be entitled.

No Assignment or Transfer. The rights and benefits provided under these General Terms and Conditions, as well as under any agreement that incorporates them, shall not be assigned without the express written permission of LRS. Similarly, the Deliverables may not be transferred to any other person, without the express written permission of LRS. Notwithstanding, Purchaser may temporarily loan its customers paging receivers. Purchaser may also transfer the Deliverables, as well as the rights and benefits under these General Terms and Conditions and any agreement that incorporates them, as an ancillary part of a sale of its business or substantially all of its assets. Following any assignment or transfer, Purchaser shall remain bound by all of the duties and obligations that are set forth in these General Terms and Conditions and any agreement that incorporates them.

No Third Party Beneficiary. Except as otherwise expressly provided in this Agreement, these General Terms and Conditions, as well as any agreement that incorporates them, are solely for the benefit of Purchaser. Neither the customers of Purchaser, nor any other person is an intended beneficiary of these General Terms and Conditions or any agreement that incorporates them, nor shall any such person have the right to any benefit that is provided under these General Terms and Conditions or any agreement that incorporates them.

Merger. Except as otherwise specifically set forth herein, these General Terms and Conditions, and any agreement that incorporates them, supersede any oral or other representation that may have been made about these General Terms and Conditions, any agreement that incorporates them, or any of the Deliverables. These General Terms and Conditions, and any agreement that incorporates them, may not be modified or superseded, except by a written agreement or a written amendment that is signed by LRS. In the event of any inconsistency between these General Terms and Conditions or any agreement that incorporates them and any form or other document supplied by Purchaser, such as a purchase order, the terms of these General Terms and Conditions or any agreement that incorporates will prevail

Severability. In the event that any portion of these General Terms and Conditions or any agreement that incorporates them is found to be invalid or unenforceable for any reason, the remaining portions shall continue to be in full force and effect.

Fees & Payment. Purchaser agrees to pay all Service and Deliverable fees, plus any applicable taxes, in accordance with the terms and payment method set forth in this agreement. Purchaser is responsible for providing accurate billing and contact information to LRS. LRS retains the right to suspend or terminate services if fees become past due. LRS reserves the right to change Service rates by providing Customer at least 30 days' notice prior to billing.

Term & Termination. Purchaser has the option of purchasing Monthly or Annual service plans which are non-refundable and not available for proration except as required by law. Monthly agreements will auto-renew on a month-to-month basis until such time that a formal termination notice has been received by LRS. Prepaid Annual agreements will automatically renew at the end of each annual term unless Purchaser has given cancellation notice 30 days in advance of renewal term. Monthly-billed Annual agreements will auto-renew on a perpetual month-to-month basis upon completion of the initial annual term until cancellation notice is received by LRS. In the event that any agreement incorporating these General Terms and Conditions is terminated for any reason, all of the duties and obligations that the agreement and these General Terms and Conditions impose upon Purchaser shall continue in full force and effect, except any obligation to make payment for a Deliverable prior to its delivery.

